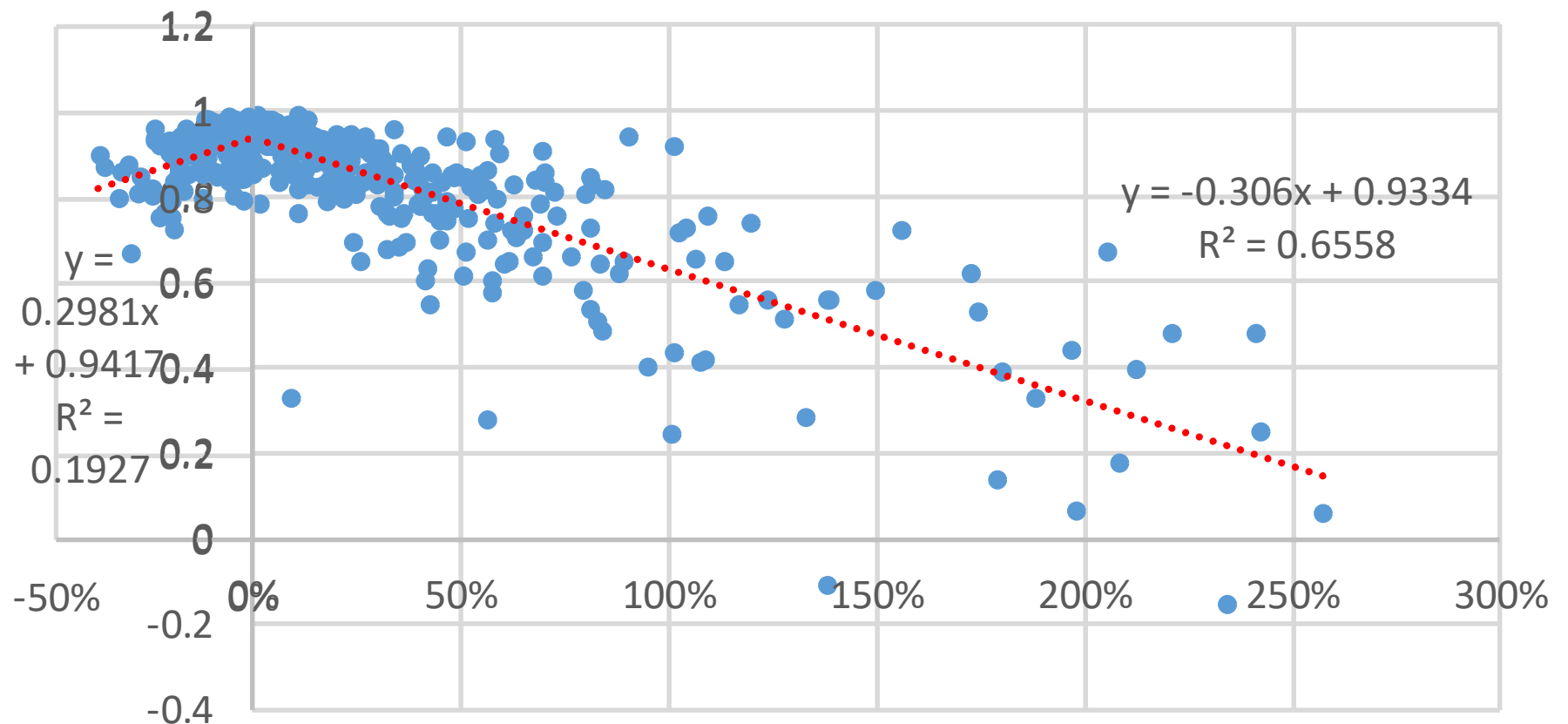
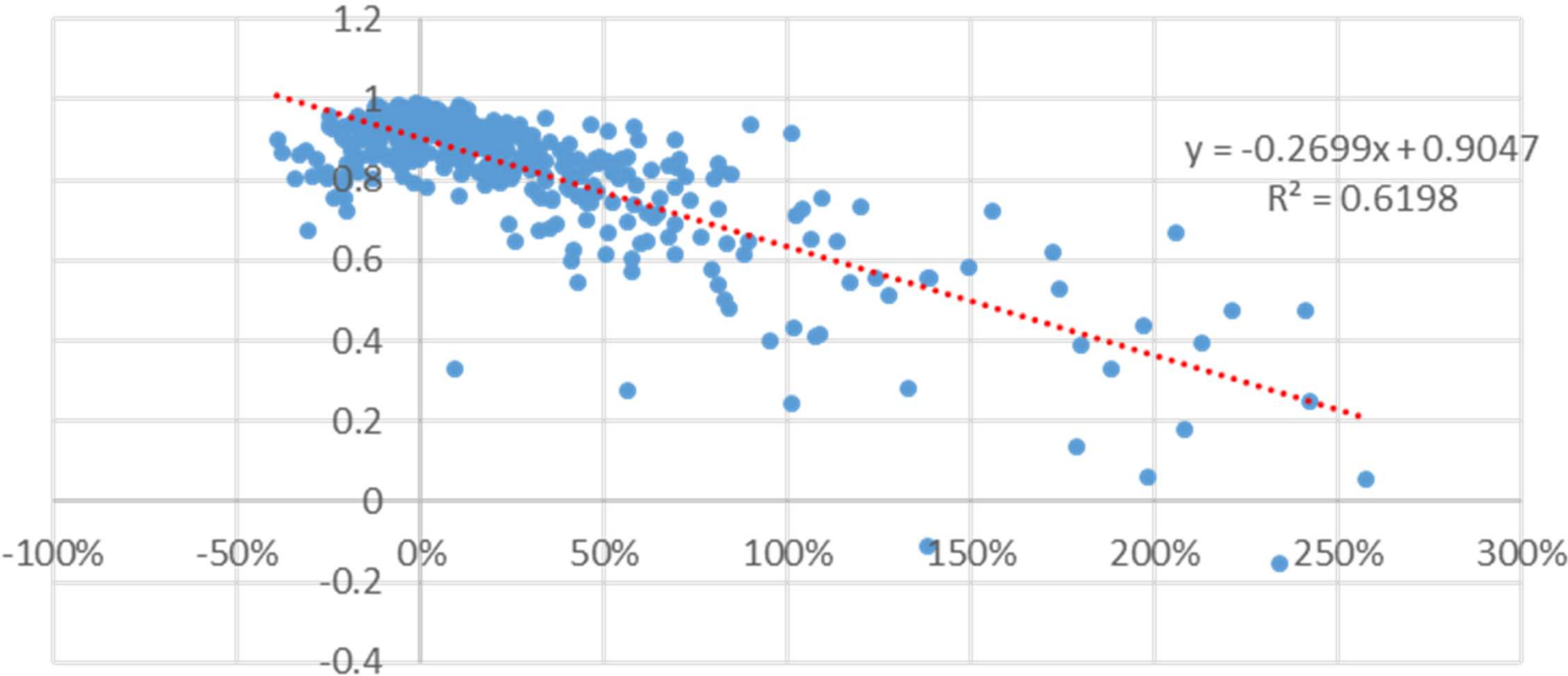


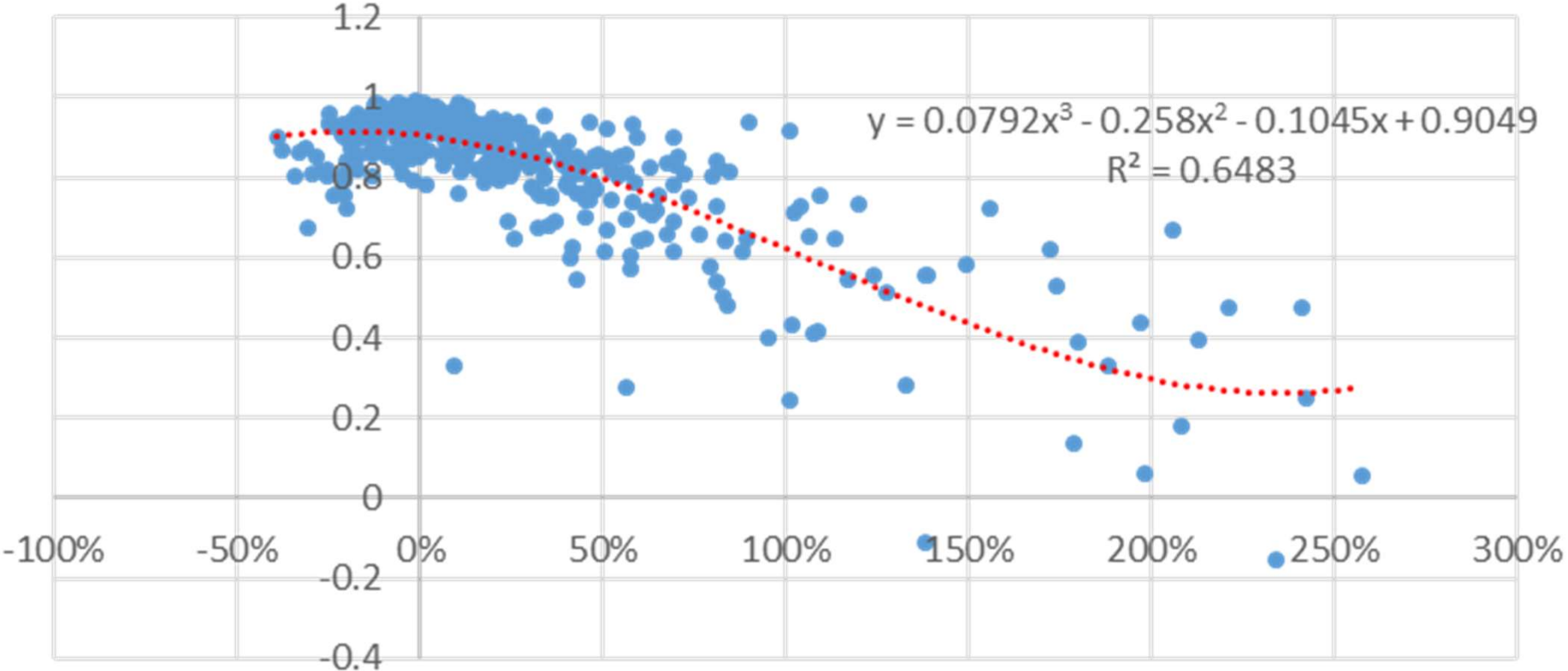
Original Hypothesis – X Variable is Independent



Null Hypothesis – Y Variable is Dependent Variable



True Relationship? – X Variable Mostly Independent
(But Y has small amount of interdependency with X)



Question – How can this data be used to quantifiably measure the nature of interdependence between Y and X?

Potential Answer? – The amount of interdependency can be measured by the level the polynomial trend line is pulled away from the original hypothesis.

Polynomial Trend is pulled 40% toward the null hypothesis trend, therefore, the Y variable has ~40% of the influence on the X, and the Y has ~60% influence on the X.

